

Mercedes-Benz Museum. How to find us.

Traffic guidance system:

Please follow the NeckarPark/Mercedes-Benz traffic guidance system. The Mercedes-Benz Museum is only a stone's throw away from the Mercedes-Benz Arena.

Arrival by car:

From Karlsruhe, take the A 8 motorway to the exit Stuttgart-Vaihingen, then follow the A 831 and the B 14 towards Stuttgart-Zentrum (city center). Continue on the B 10/B 14, following the NeckarPark traffic guidance system and signs for the Mercedes-Benz Museum.

From Ulm, take the A 8 motorway to the exit Esslingen-Zentrum (center). Then continue on the B 313 and B 10 towards Stuttgart. Follow the NeckarPark traffic guidance system and signs for the Mercedes-Benz Museum.

From Heilbronn, take the A 81 motorway to the Zuffenhausen exit, then take the B 10 towards Stuttgart-Zentrum (city center) and follow the NeckarPark traffic guidance system towards Stuttgart-Bad Cannstatt/Esslingen and signs for the Mercedes-Benz Museum.

Parking:

Parking facilities are provided in the Museum's car park or in the P4 multi-storey car park. Parking fees: € 1 per hour for the first, second and third hour; € 2 per hour from the fourth hour. Guests with vehicles above a height of 2 m may use several bus parking bays adjacent to the Museum premises during the regular opening hours. Family and disabled parking bays are provided for our disabled visitors in the Museum car park (not P4). These can be found on level EG close to the ticket machines and glass doors. Vehicles for disabled persons beyond a height of 2 m are permitted to park directly in front of the main entrance of the Museum. Wheelchair users are requested to follow the signs for the lift.

Classic cars:

We extend a particular welcome to visitors arriving by classic car. We would like to invite you to park your classic car directly in front of the main entrance of the Museum.

Events:

During VfB Stuttgart's home matches and other major events access to the Mercedes-Benz Museum may be restricted. In such circumstances we recommend the use of public transport.

Arrival by train:

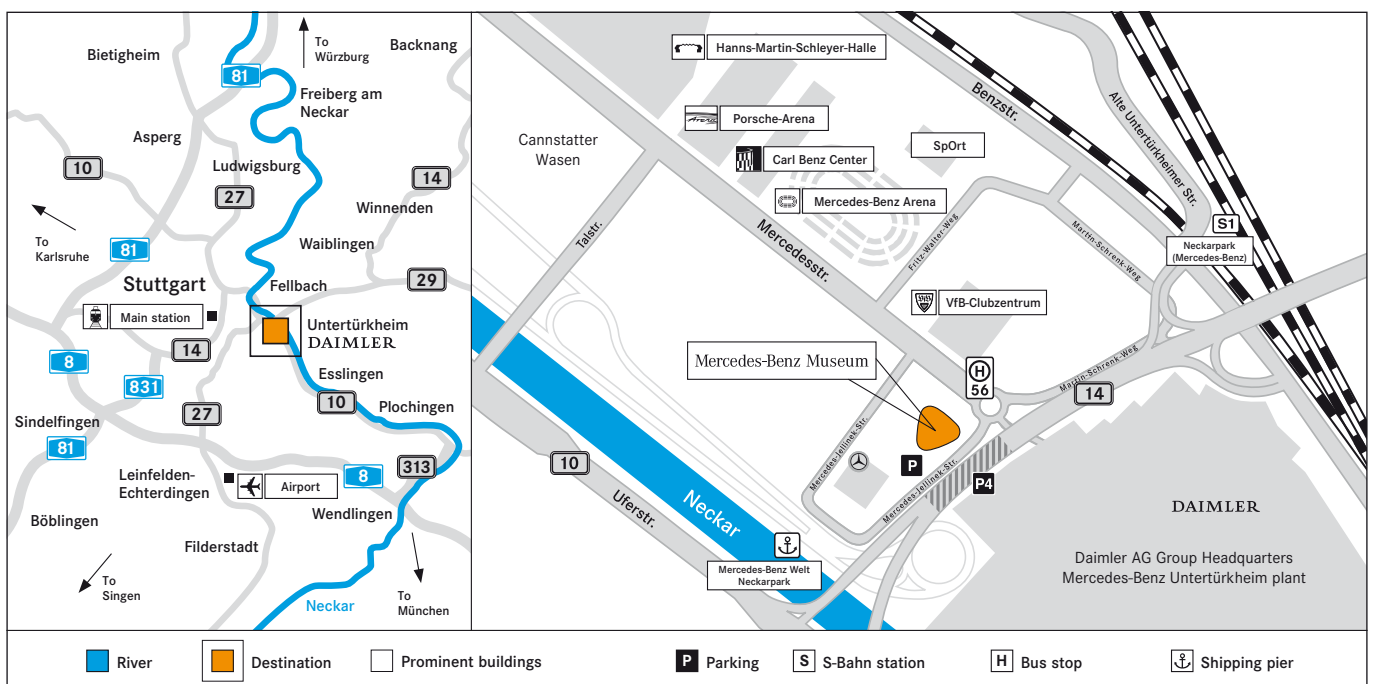
From Stuttgart main station take the S-Bahn (rapid transit system) of line S1 in the direction of Kirchheim (Teck) to NeckarPark (Mercedes-Benz). On leaving the train, follow signs to the Museum.

Arrival by bus:

Bad Cannstatt station is served by S-Bahn lines S1, 2 and 3 as well as by the regional rail network and Regional-Express. Bus line 56 connects Bad Cannstatt station with Mercedes-Benz Welt.

Arrival by boat:

Boats stop regularly at the landing Mercedes-Benz Welt/NeckarPark. Further information: www.neckar-kaeptn.de





Mercedes-Benz Museum. Opening hours, prices and contact.

Opening hours:

From Tuesday to Sunday and on public holidays from 9.00 a.m. to 6.00 p.m. – ticket desk closes at 5.00 p.m. Closed on Mondays.

Museum Shop: From Tuesday to Sunday and on public holidays from 10.00 a.m. to 6.00 p.m. Closed on Mondays.

Tip: Shop and stroll at any time – even without visiting the Museum before. Present your parking ticket when shopping in our museum shop or visiting our restaurants and you will be granted one hour of free parking.

Restaurant: From Tuesday to Sunday and on public holidays from 10.00 a.m. to 7.00 p.m. Closed on Mondays.

Cafébar: From Tuesday to Sunday and on public holidays from 10.00 a.m. to 6.00 p.m. Closed on Mondays.

The Museum will be closed on the following public holidays:

2009/2010

24 December 2010, Christmas Eve
25 December 2010, Christmas Day
31 December 2010, New Year's Eve
1 January 2011, New Year's Day

Please note:

When visiting the exhibition, children under the age of 14 must be accompanied by an adult. Dogs are not allowed in the exhibition rooms. The Museum has facilities for disabled visitors.

Barrier-free museum:

The Mercedes-Benz Museum combines the concept of a barrier-free and universally accessible exhibition with unique architectural design. All areas and levels of the Museum are served by satellite lifts. Wheelchairs and walking aids can be hired as needed.

Newsletter – the latest and more:

Keen to discover more?

The Mercedes-Benz Classic Newsletter provides regular updates on the latest news, events and offers at Mercedes-Benz Classic. Further information is available at www.mercedes-benz.com/classic-newsletter.

Contact and reservations:

Mercedes-Benz Classic Customer Center
Phone: +49(0)711-17 30 000
Fax: +49(0)711-17 30 400
Email: classic@daimler.com

Address:

Mercedes-Benz Museum GmbH
Mercedesstrasse 100
70372 Stuttgart

Further information:

www.mercedes-benz.com/museum

Category	in EUR	Category
Day ticket	8.00	Adults
Day ticket (reduced)	4.00	Juveniles (from the age of 15 up to and including the age of 17) · students (from the age of 15) · trainees · university students · persons performing military/civilian service · all those over the age of 60 · unemployed persons · all those accompanying Mercedes-Benz ClubCard-Holder
Day ticket (complimentary)	0.00	Children (below the age of 15) · registered groups of schoolchildren or students, incl. accompanying group leaders · bus drivers and tour guides with registered groups on the day of visit · severely disabled visitors · disabled visitors with handicapped ID · Mercedes-Benz ClubCard holders · MercedesCard credit card holders · journalists
Evening ticket ¹ (4.30 p.m. to 6 p.m. Ticket desk closes at 5.00 p.m.)	4.00	Adults
Evening ticket (reduced) ¹	2.00	See Day ticket (reduced)
Groups ¹ Groups with more than 10 visitors (regular or reduced)	7.00	Adults
Groups (reduced) ¹	3.00	See Day ticket (reduced)
One-year ticket	32.00	Adults
One-year ticket (reduced)	16.00	See Day ticket (reduced)
Simulator	4.00	All museum visitors over 140 cm. Tickets are available at the Simulator ticket desk.
Public guided tours	4.00	Booking via the Mercedes-Benz Classic Customer Center at the ticket desk or online.
Guides tour for groups	80.00 ¹	Booking for groups up to 20 persons per guide via the Mercedes-Benz Classic Customer Center.
Fascination of Technology (guided tour)	0.00	Booking for individual visitors and groups up to 20 persons per guide via the Mercedes-Benz Classic Customer Center.
Guided factory tour of the parent plant	0.00	Booking for individual visitors and groups up to 15 persons per guide via the Mercedes-Benz Classic Customer Center or at the ticket desk.



Mercedes-Benz Museum. Guided tour and factory tour.

Fascination of Technology:

“Fascination of Technology” gives a unique opportunity to experience at first hand the latest advances in Mercedes-Benz design, development and production. This is where the visions of engineers and designers – translated into reality – are displayed. On the spot, an expert will explain the topics.

Groups (maximum of 20 people):

Tours in German and in English.

Duration: Approx. 30 minutes.

Admission is free. Booking: Please contact the Mercedes-Benz Classic Customer Center.

Architecture and art tours:

Gain an insight into the unique design of the Mercedes-Benz Museum by taking a special guided tour with architectural and conceptual focuses. Take a closer look inside the fascinating world of this extraordinary building.

Guided architectural tours:

Fridays at 4.00 p.m.

Duration: Approx. 90 minutes.

Tickets: Available at the ticket desk/ € 4 in addition to normal entrance fee.

Booking: Via online ticketing and the Mercedes-Benz Classic Customer Center.

Groups (maximum of 20 people):

Booking: Please contact the Mercedes-Benz Classic Customer Center.

Art tours on request.

Guided vehicle tours:

Discover 160 vehicle exhibits as well as a wealth of automotive accessories and get an overview of the fascinating history of the automobile at Mercedes-Benz.

The chronological tour through the Legend rooms will take you from the dawn of automotive history in 1886 through to the present day. The Museum also houses epoch-bridging exhibits set out in five thematic Collection rooms.

From Tuesday to Sunday, 10.45 a.m.

(tour in English) and 2.30 p.m.

(tour in German)

Duration: Approx. 75 minutes.

Tickets: Available at the ticket desk/

€ 4 in addition to normal entrance fee.

Booking: Via online ticketing and the Mercedes-Benz Classic Customer Center.

Groups (maximum of 20 people):

Booking: Please contact the Mercedes-Benz Classic Customer Center.

Electronic audio-guide:

In addition, electronic audio-guides featuring a wide selection of languages are provided free of charge for groups wishing to explore the museum without a personal tour guide. There is a special profile for children as well.

Factory tour Untertürkheim:

Guided tours of the Motorenwerk Untertürkheim facility can be arranged for museum visitors during regular times of production. This is a production site for major assemblies where engines, transmissions and axles are manufactured. Mercedes-Benz cars being assembled can be seen in the plants at Sindelfingen, Bremen and Rastatt.

We regret that for insurance reasons only visitors over the age of 16 are permitted to take part in the factory tours. Please bring appropriate footwear. Photography and filming is not permitted.

At certain weekdays at 11.50 a.m.

Tickets: On day of factory tour in the Museum on availability.

Guided tours are presented in German. Tickets are free of charge.

Booking: Via the Mercedes-Benz Classic Customer Center.

Professional Groups

(15 up to max. 30 people):

Groups with technical know-how concerning production procedures and motor technologies please contact Mr. Thomas Thum via Email (werkbesichtigung.ut@daimler.com).

Mercedes-Benz Museum. Information for groups.

Information – personal service:

Create a visit tailored to your special requirements. Why not combine your museum visit with an expert guided tour, a pit stop in the restaurant and a personal souvenir from the Museum Shop? Employees at the Mercedes-Benz Classic Customer Center will be pleased to help you plan your visit.

Free on-site bus parking:

On arrival at the Mercedes-Benz Museum you will have access to several free on-site bus parking bays (see map below). Please pay heed to the street signs on location, too. Groups arriving by bus can also be dropped off at the Museum's on-site turning loop.

Reduced waiting times:

To reduce waiting times, a separate group admission counter is available for groups visiting the Museum.

Service for bus drivers/tour guides:

As bus driver and/or tour guide with a registered tour group you are entitled to free admission to the Mercedes-Benz Museum and a light meal at one of our high-quality food outlets. Tickets are available at the information desk. Please present your bus driver's licence and letter of confirmation when registering at the ticket desk in the Mercedes-Benz Museum.

Contact and reservations:

Mercedes-Benz Classic Customer Center
 Phone: +49(0)711-17 30 000
 Fax: +49(0)711-17 30 400
 Email: classic@daimler.com

Address:

Mercedes-Benz Museum GmbH
 Mercedesstrasse 100
 70372 Stuttgart

Further information:

www.mercedes-benz.com/museum

